

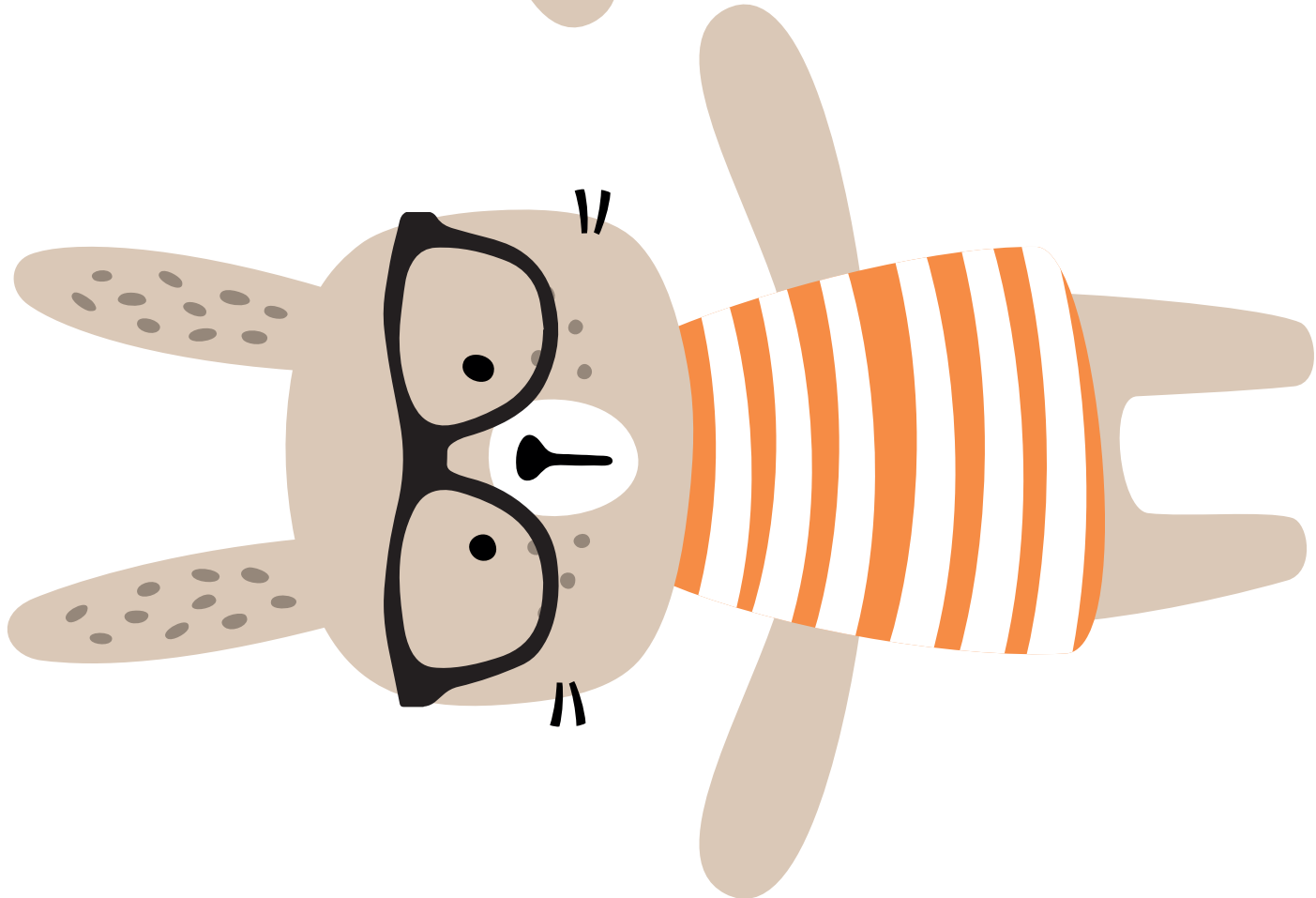
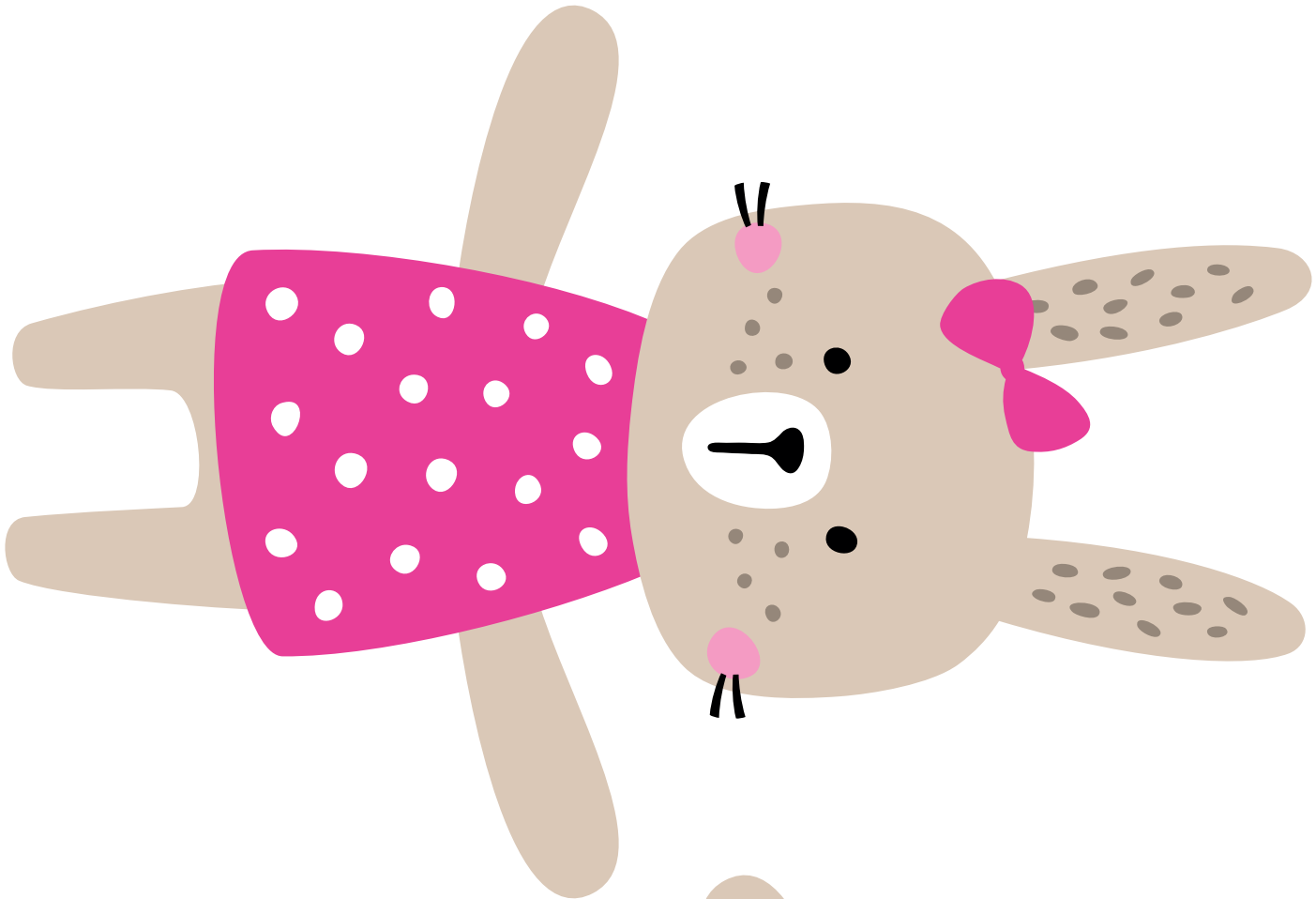
What you need:

Your Epson printer
Epson genuine ink
Good quality A4 paper or card
Scissors
Glue / double-sided-tape

Instructions:

1. To make your animal decoration, carefully cut around the edges
2. Fold the arms inwards
3. Stick the hands together with glue or double-sided tap
4. Place your Easter treats safely in their arms





EPSON®

