

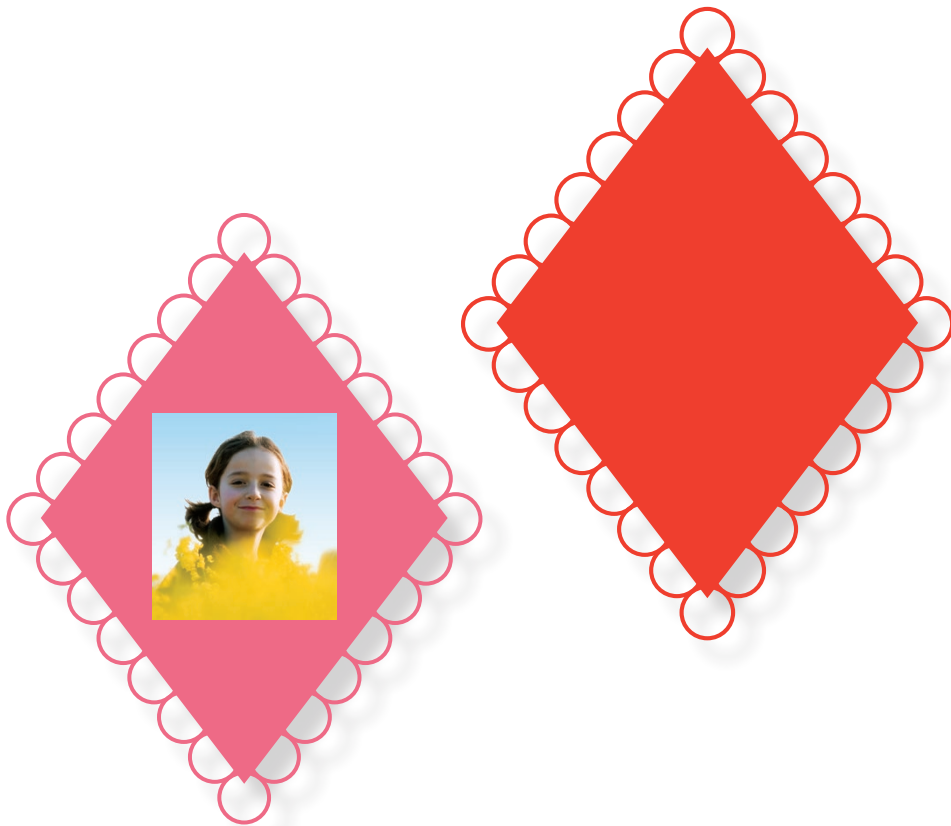
What you need:

- Your Epson printer
- Good quality A4 paper or card
- Scissors
- String or thin ribbon
- Glue, double-sided sticky tape or double-sided photo mounts
- Your favourite photos of people, animals or similar

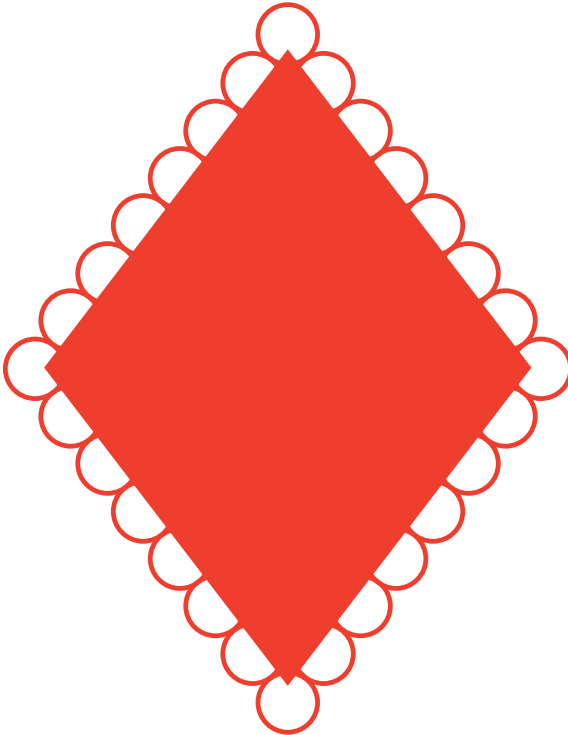
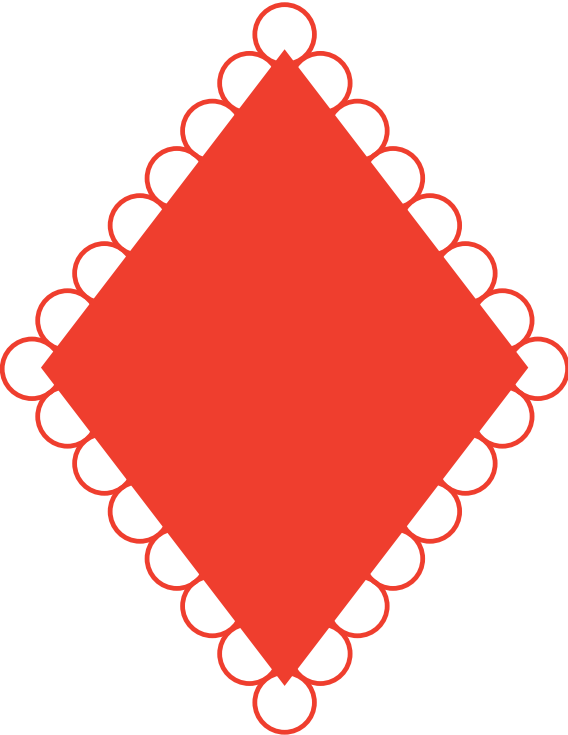
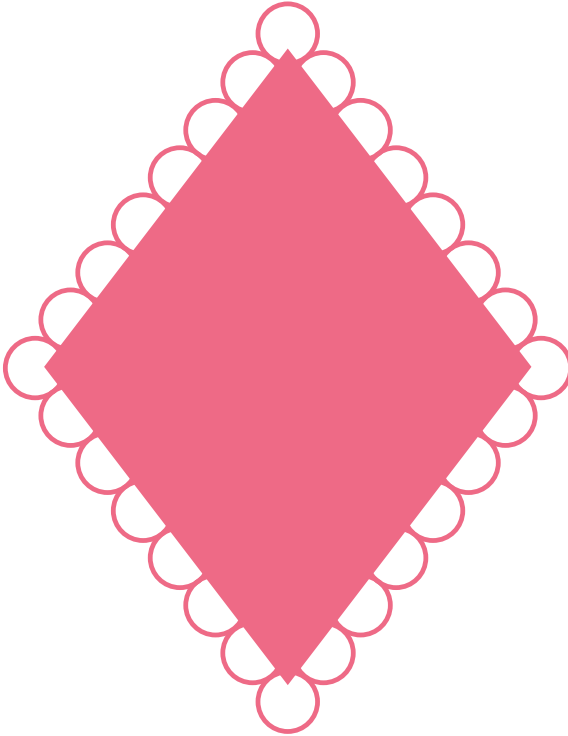
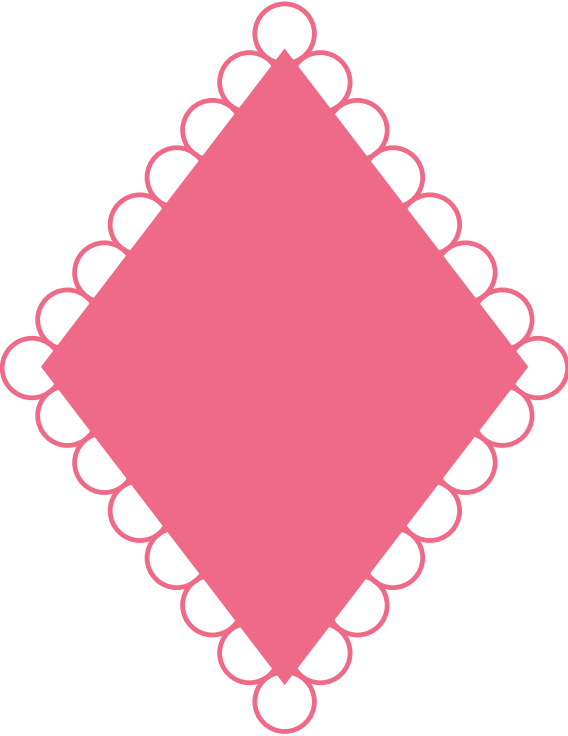
Instructions:

1. Make sure your printer's properties are set to high quality, colour printing
2. Print and cut out each ornamental shape
3. Customise each ornament by cutting your photos to size and sticking them onto the space provided
4. Make a small hole in one corner
5. Thread a piece of string or thin ribbon through the hole
6. Hang up your homemade ornaments or use them to decorate a gift

(Don't forget: your Epson printer is perfect for printing photos)



EPSON[®]
EXCEED YOUR VISION



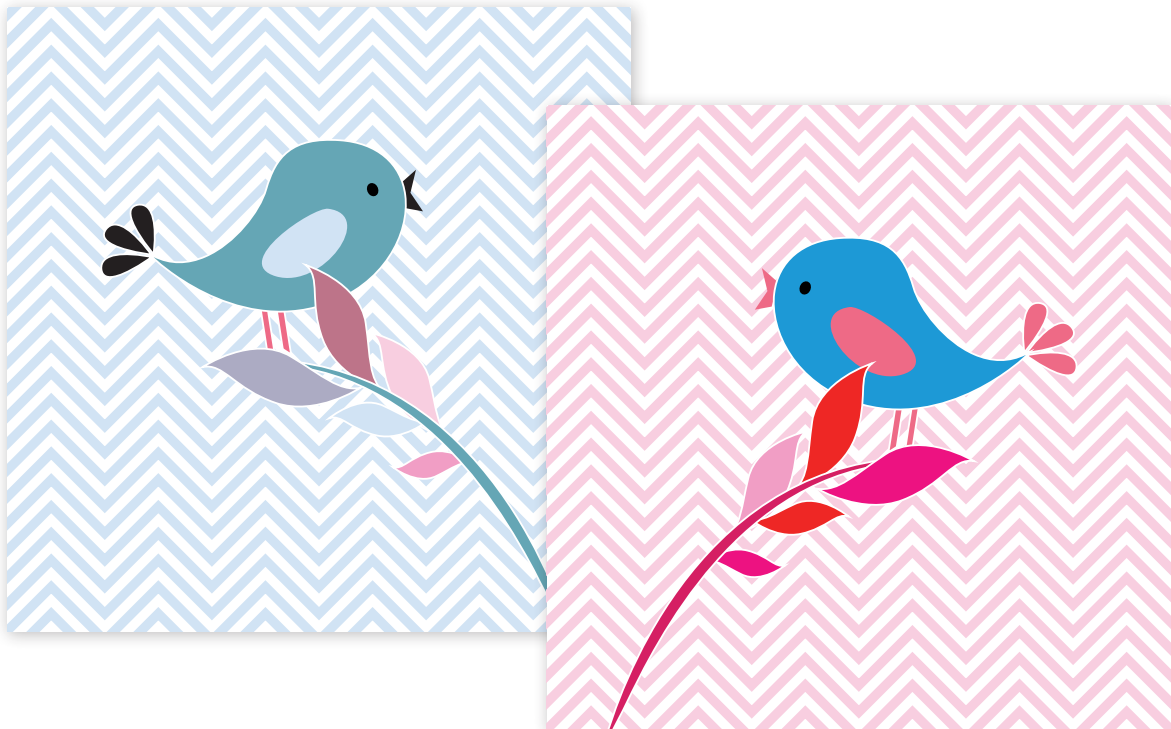
What you need:

- Your Epson printer
- Good quality A4 paper or card
- Scissors
- Coloured card (optional)
- Glue, double-sided sticky tape or double-sided photo mounts (optional)

Instructions:

1. Make sure your printer's properties are set to high quality, colour printing
2. Print and cut out each ornamental shape
3. Use the ornaments to add a decorative touch to gifts and surfaces

Epson tip: you can stick several ornaments on a piece of coloured card to make a pretty display arrangement



EPSON[®]
EXCEED YOUR VISION

